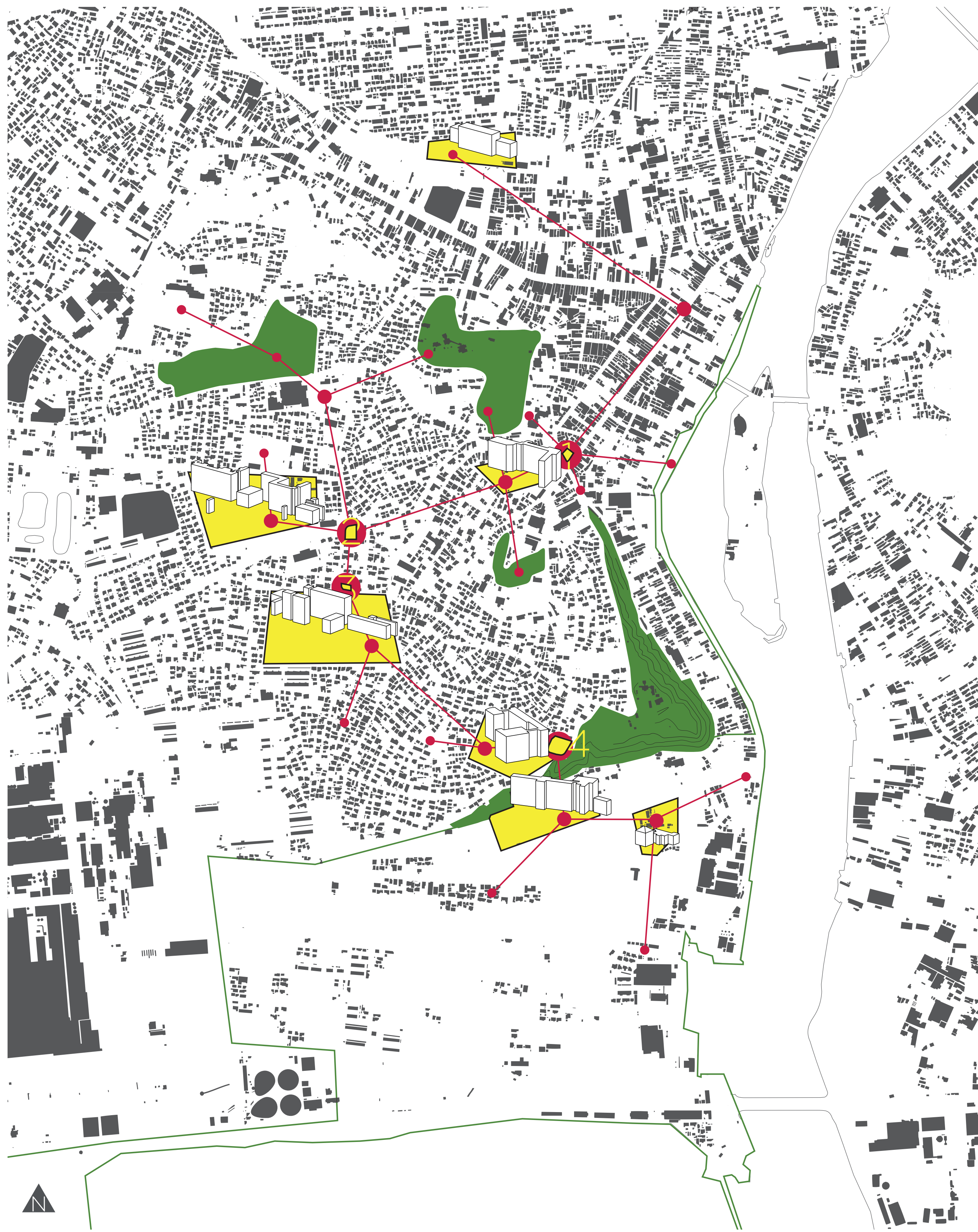


HOPE FOR COMMUNITY



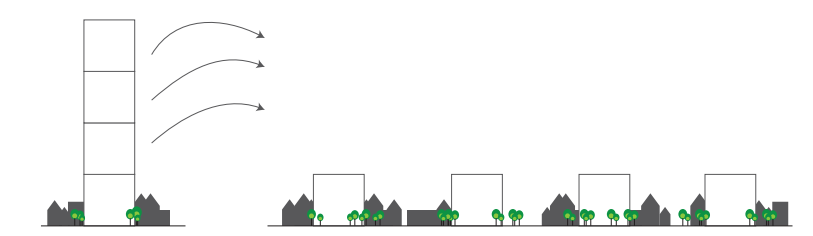
module 1: view of market open space



The Hope For Community Project is an approach to rethink the disaster facilities in Japan. It proposes a unified and unifying intervention among the **core** of the urban space, taking into consideration the living organism that is the city, its citizens and their **needs**.

The place of work is Ishinomaki, Miyagi Prefecture, Japan, because of the important questions it raises and the imminent need of response.

The site selected is not single. After analysis of the disaster of March 2013 we see that the part of the city that was spared is "hiding" behind Hiyori-Yama hill. Therefore, to provide the optimal protection, the project takes place among the streets of Ishinomaki. It seemed logical not to create one facility but to **dispatch** it though out the city. By doing so, a **network**, that extends from the railway station and city centre to the smaller districts and the sea front, is created.. It **connects** the city on one hand and the memorial park, combining in that way the past, the present and the future; the **memory** and **hope**.

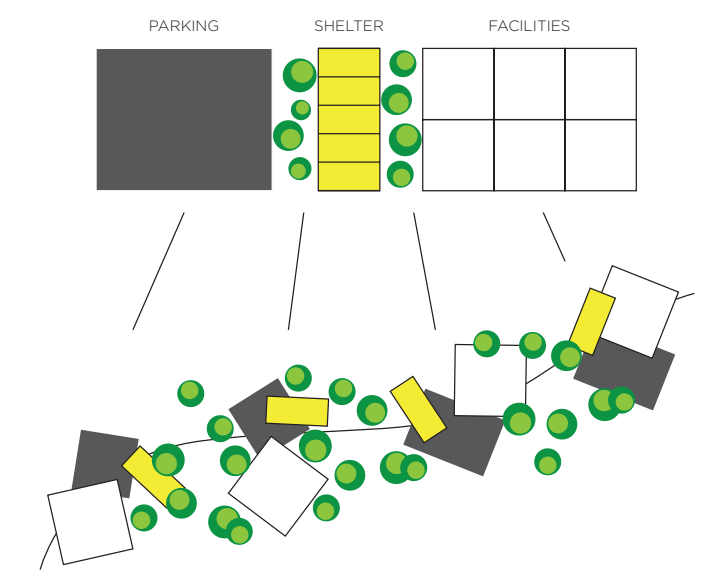


INTEGRATION IN THE URBAN LANDSCAPE

The centre takes the form of four, smaller scale, buildings that echo and **blend** with the existing urbanisation. By this means it also becomes easier to help the different affected zones, since the area of influence becomes greater.

Four sites were selected, taking as condition that the proposal must become part of **everyday life** while blending together education and prevention. The key appeared instantly: **School's** surroundings are the most appropriate areas for this design. Indeed:

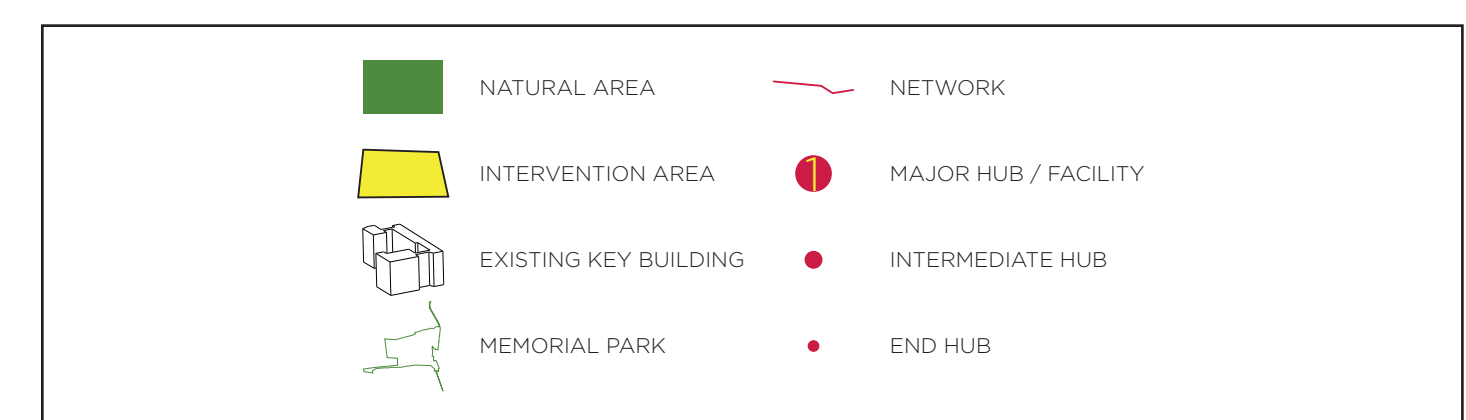
- Disaster facilities must be **visible** and easily accessible. Schools are buildings that echo to every citizen and their location is widely known.
- Being close to a school the facility will give the opportunity to students to expand their horizons and fulfil their **education** with new and diverse subjects.
- Schools become in that way active **hubs**, transforming the area to a lively and interactive place.
- Not only students but also nearby citizens become part of a **positive flow**.



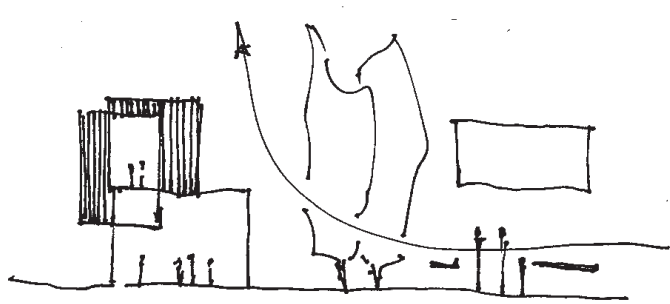
SPREAD AND POSITIVE ADDITIONAL GREEN SPACE

Each module includes, shelter, seminar and conference rooms, emergency communication room, the proper administration spaces, parking and "multi-use" rooms.

The proposal aims to respond to those challenges by connecting people and places thus becoming part of everyday life.



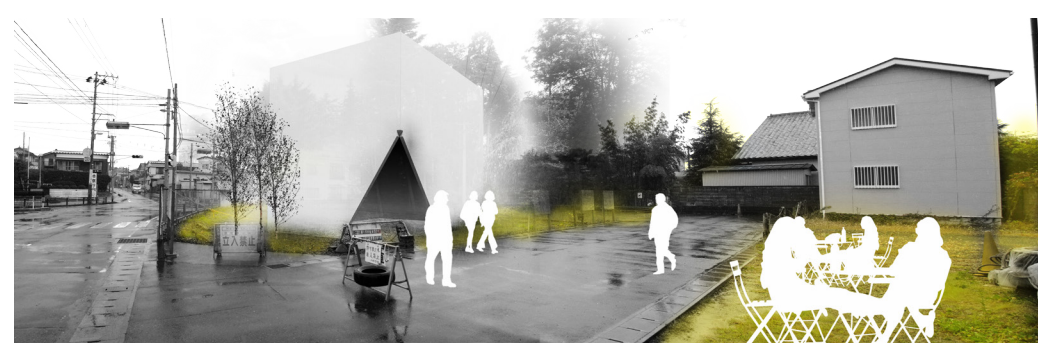
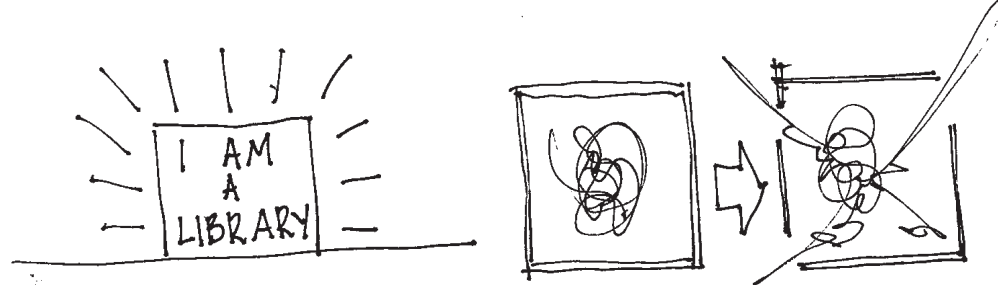
1



Located near the city centre and an elementary school, this building should refer to the historical memory of Ishinomaki. It should be inspired by the so called "fishermen's housing" built on multiple levels. It will provide an open space on the ground floor in order to host outdoor events such as local markets, animations etc. hosted by the residents. It will also provide additional indoors space for a play-room in order to give the kids a place to attend to multiple happenings.

This way, will be created a place where people could even "drop in" for 10 minutes generating interaction and exchange within different age groups of the community.

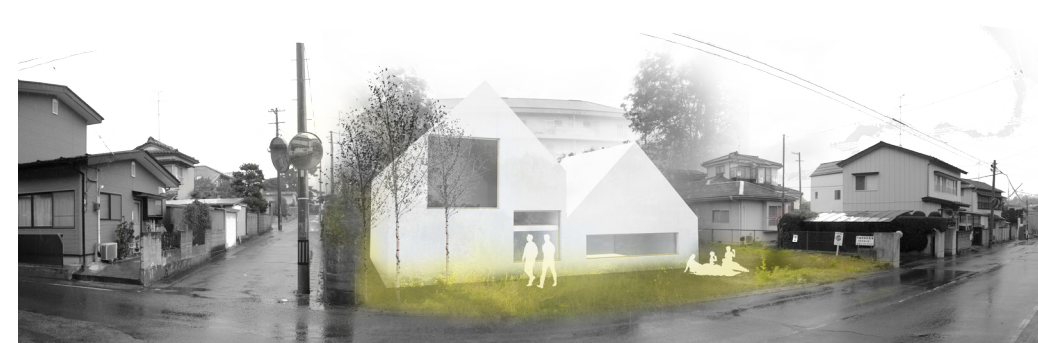
2



Built on a large site now dedicated only to parking, this module is situated near 2 Jr. High Schools and 1 High School. Therefore, it will be the larger of the four, containing a library, a café and parking space. This building can be seen as an impenetrable structure that holds the most important thing: knowledge thus, it should adopt a monolithic morphology with some well thought openings to create intimate and calm spaces.

As an added value, the café will animate a neighbourhood that is for now in lack of public attractions (coffee shops, restaurants...).

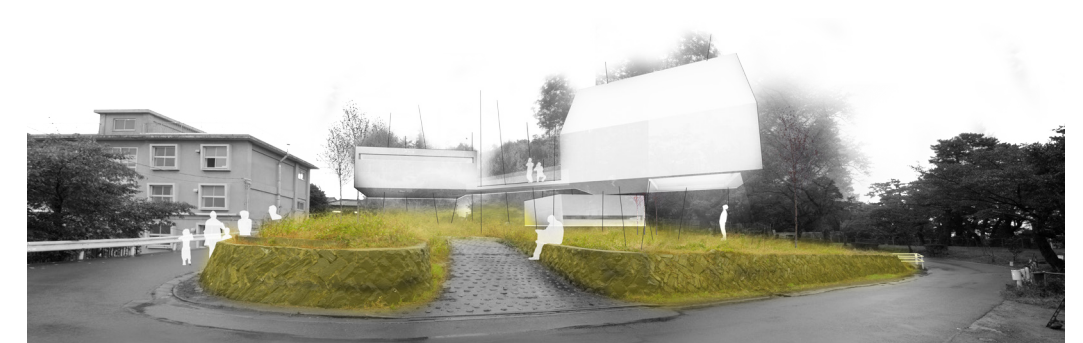
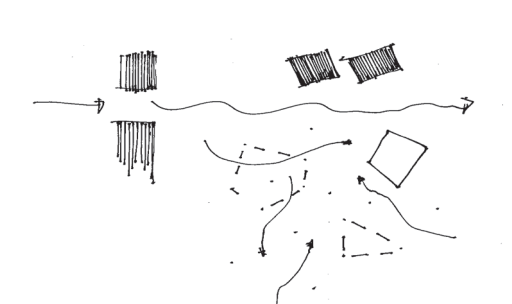
3



Integrated into a cosy area among residences and narrow streets, this building will blend completely with its surroundings. It will be a low-rise structure perhaps only one level, that will host among the other functions, a simulation room in order to make available the latest learning technology about disaster prevention. Its site is in front of a High-School making it a perfect location for an educational facility of this kind.

The building should relate by its morphology as well by its function to the everyday lives of the people.

4



Completely immersed in a green park, this site is the nearest to Hiyori Yama hill and thus to the greatest view spot of Ishinomaki. It is difficult then to imagine there something else than a harmonic combination of disaster management and culture. This last edifice will need to be thought as a tree house.

Held in levitation, it releases the ground level from any heavy intervention, making it possible to hold different kind of exhibitions and events. Due to the topography, this can be interpreted as a public platform, a "plaza" from where a path begins towards the Memorial Park and the actual city of Ishinomaki.

module 4: view of exhibition platform